

City of Edinburgh Council - Rising School Rolls Phase 3

James Gillespies Primary School

Stakeholder Meeting 1

Thursday 05 June 2014

CONTENTS

- 1 Introduction/ Who we are**
- 2 Where we are / where we are going to be?**
- 3 Site and Location**
 - Photos
 - Site boundary
 - topographical/climate
 - Access and connections
 - Existing features
 - Scale and arrangement
- 4 The Classroom**
- 5 Design**
 - We consider
 - Precedents
 - Culture, history and character
- 6 Summary**

Who we are

Who we are

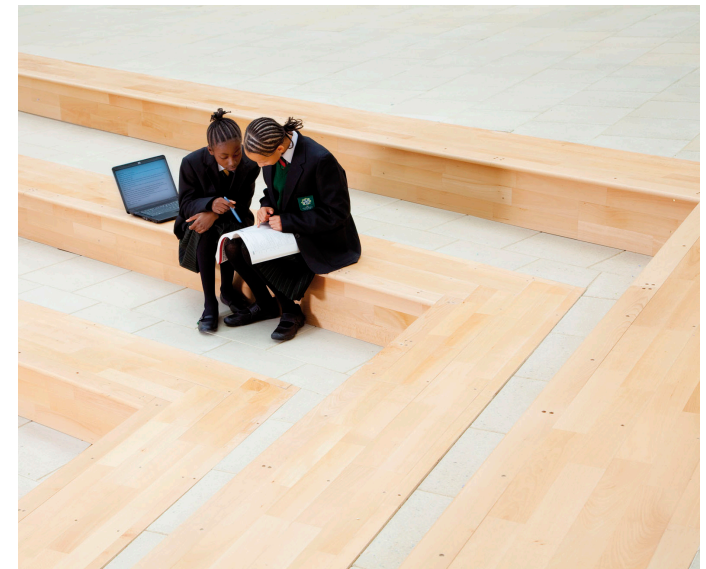
Scott Brownrigg is an award-winning international design practice providing architecture, masterplanning, urban design, interior design and town planning services. Recognised as one of the top architectural practices in the United Kingdom, the practice undertakes projects across sectors that include business space, education, residential, hospitality, defence, industrial and regeneration.

Scott Brownrigg has offices in London, Guildford, Cardiff, Edinburgh, Croatia and Singapore. This geographic spread, supported by strategic alliances in Russia and the Middle East, enables the practice to serve its growing international client and project base.

The practice's recent track record includes projects for leading global brands such as Google, Cisco, KPMG, Quintiles, Thomson Reuters and BP. Major projects include the design of Skolkovo Park in Moscow, Cardiff Pointe in Wales and the University of Reading's new Malaysian Campus. Recently the practice has also had the honour of seeing one of its projects from the 1960s, the Yvonne Arnaud Theatre in Guildford, awarded Grade II listed status.

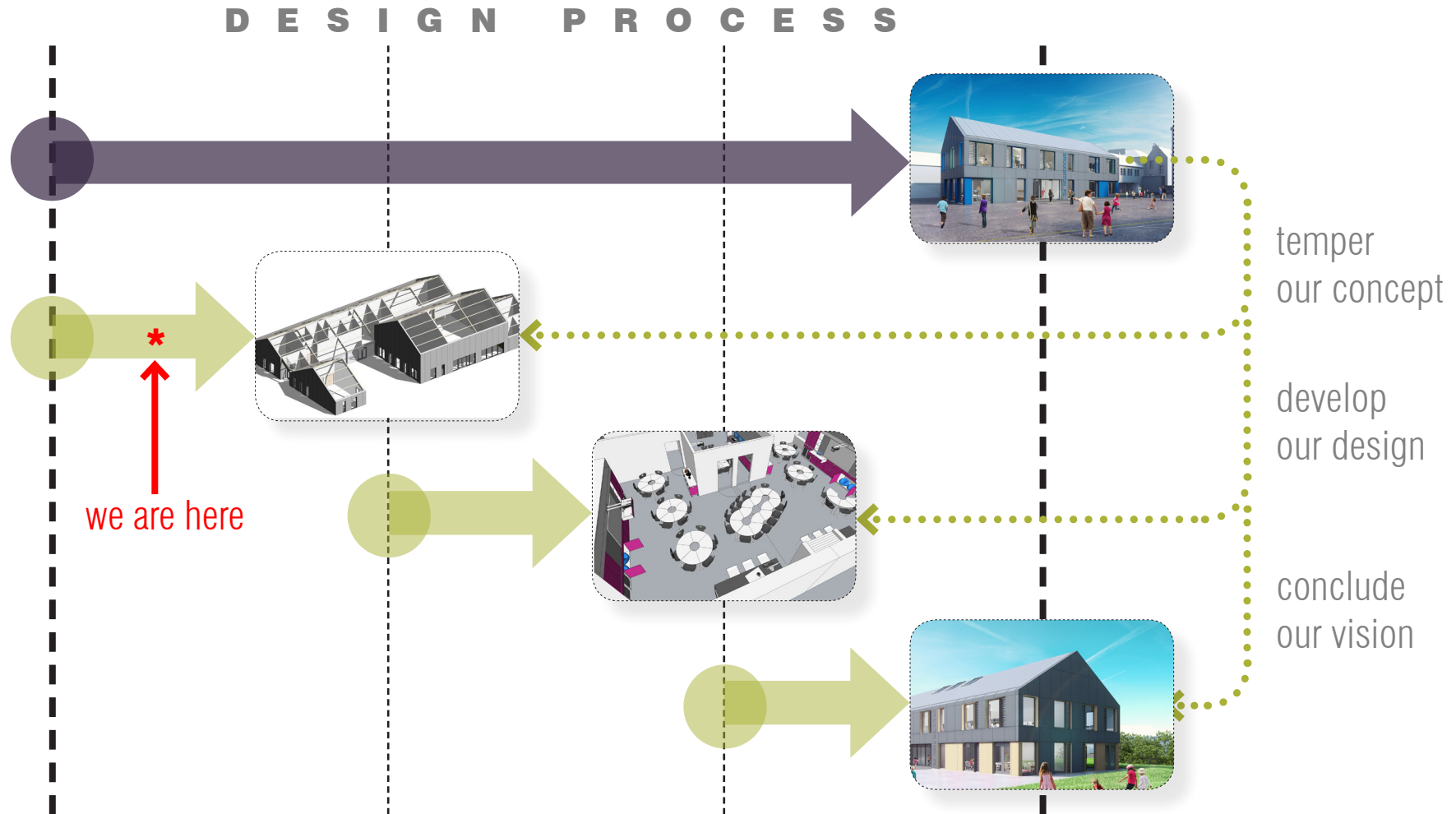
Scott Brownrigg is proud of its 100 year history creating inspirational environments for working, living, learning or relaxing. Everyone within the practice focuses on providing clients with a service that combines commercial intelligence with excellence in creative design. Each project evolves by developing a deep empathy with the client, investing time at the outset to understand their objectives and vision. The aim is to ensure that each project makes a positive lasting impact on everyone that visits or experiences it.

Scott Brownrigg are currently working with Hub Southeast to deliver the Raising the Bar Phase 2 school extensions which are due to be opened after the summer break in 2014.



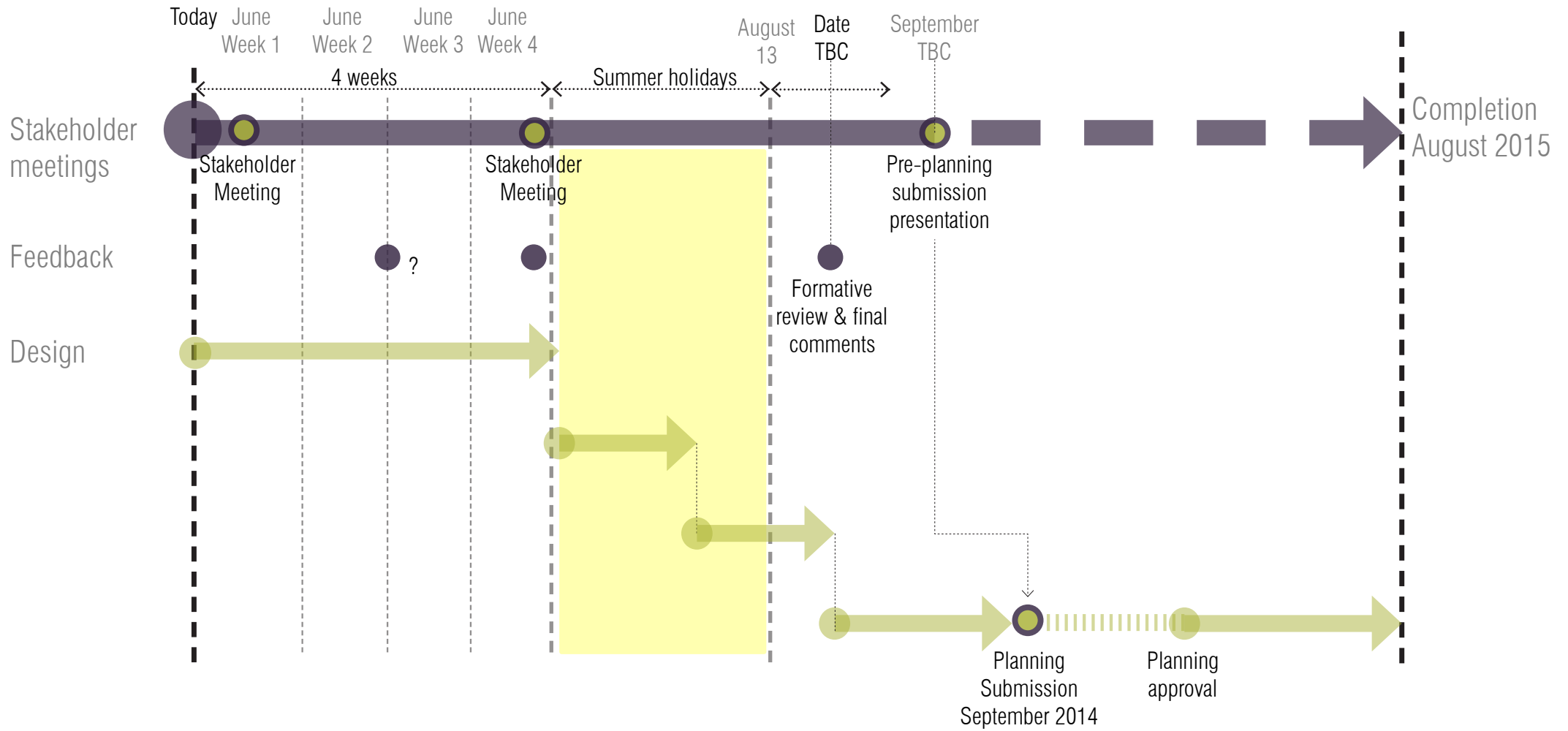
Where we are / where we are going to be?

Where we are / where are we going to be?



James Gillespies Primary School

Programme



Site and Location



Site Assessment - yet to be carried out!

1 - Site Boundary/ Existing Buildings and Services including photo survey

for example....

2 - Topography/ Ground/ Climatic Conditions

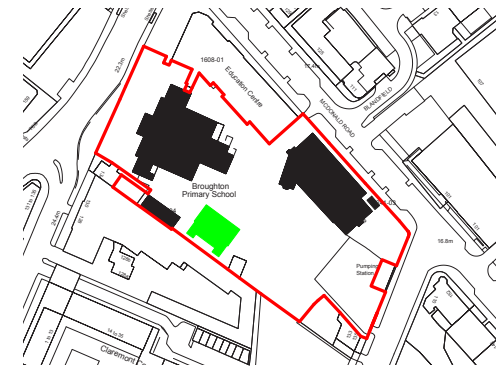
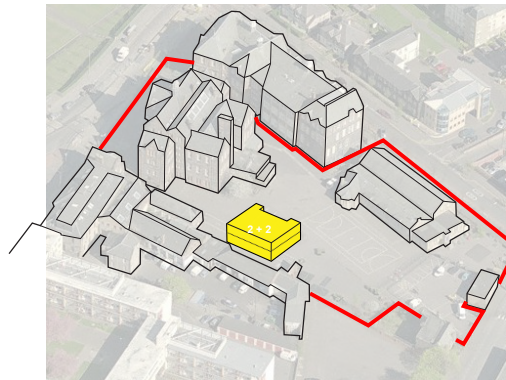
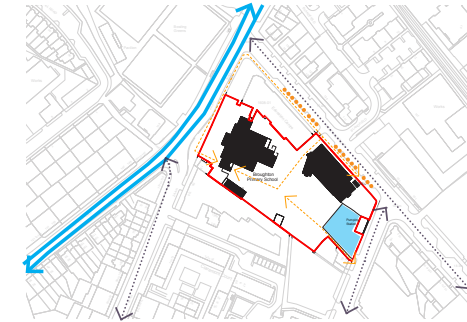
3 - Access arrangements and connections with the public highway, wayleaves, ROW's

4 - Existing features in and around the site

5 - Scale and Arrangement - relative to existing buildings

6 - CONTEXT!

- conservation area and listed building adjacent



The Classroom

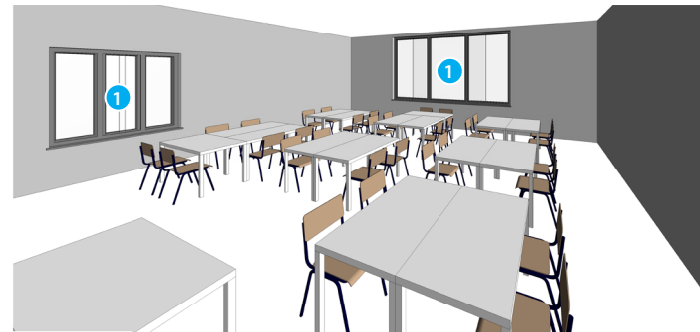
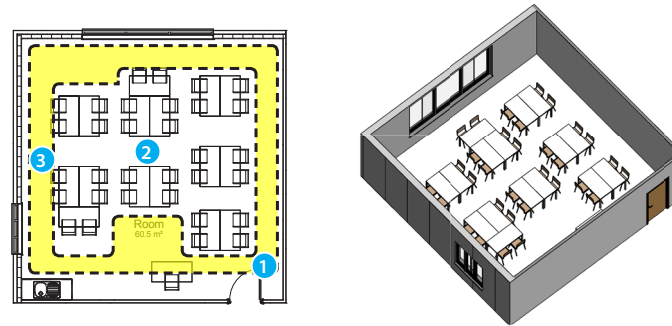


Evolution - The Classroom

Optimum School - Design Principles

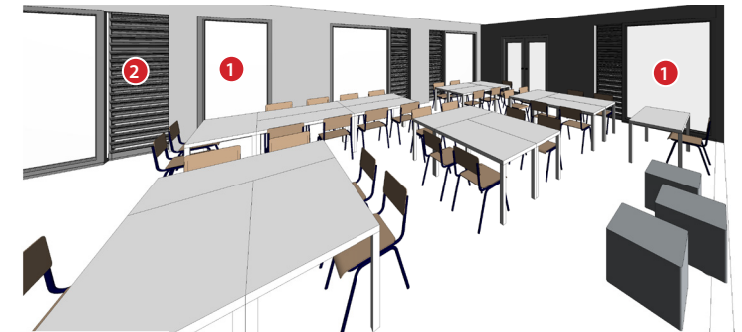
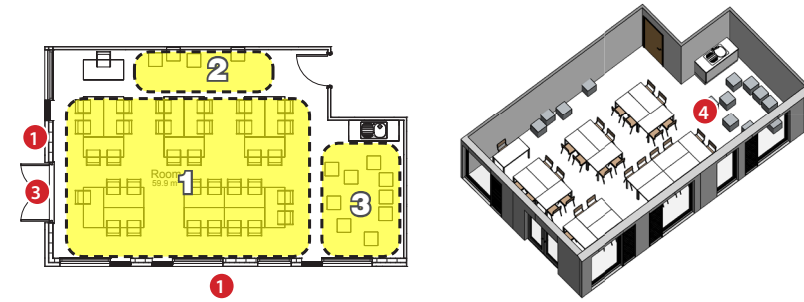
Scott Brownrigg's Optimum Schools concepts have been developed to maximise efficiency AND users needs.

Existing Rising Rolls Phase 1 Classroom



- ❶ Inner corner - daylighting and ventilation issues / small windows - requires mechanical ventilation
- ❷ Square layout gets broken up when zoned for uses
- ❸ Peripheral layout is inflexible

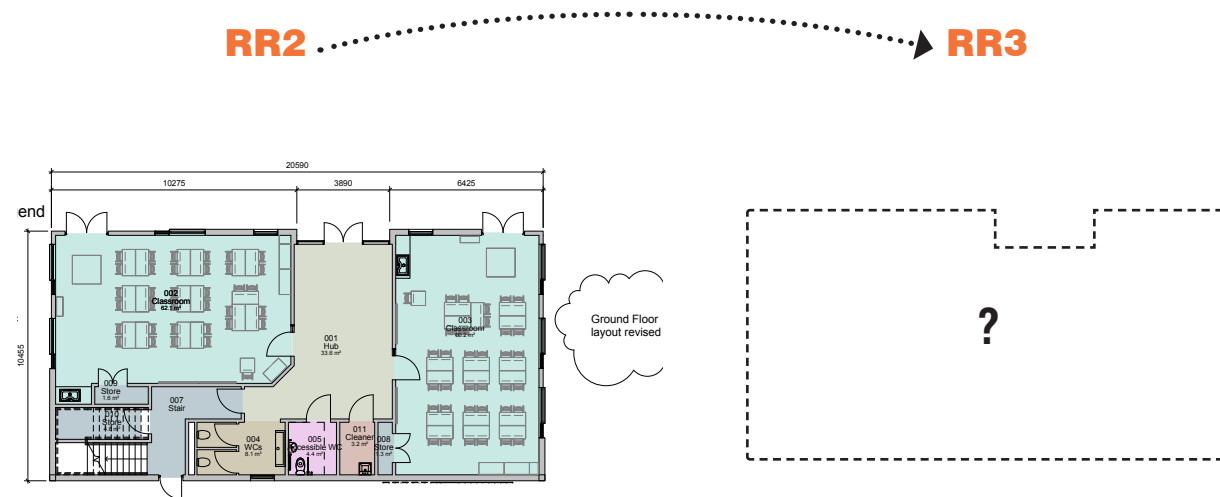
Optimum Schools Classroom



- ❶ Maximise daylighting from two sides and due to narrower depth
- ❷ Natural cross ventilation within facade due to narrower depth
- ❸ Access to outdoor learning
- ❹ L-shaped space allows for efficient zoning or breakout to corridor

James Gillespies Primary School

The Classroom - building on lessons learnt....so far



RR2 - eg. Broughton

Using our Optimum Schools concepts in RR2 we were able to maximise efficiency and users needs further.

PROS

- Classrooms to have dual aspect for light and ventilation - minimise mechanical solutions
- Classrooms could be flexibly linked/ adapted
- Shared hub space for practical group work makes use of dead space
- Inside/ outside learning potential

CONS

- Inconsistent storage arrangement may not suit all schools
- Brief requirement means that you must concede to have cloaks in backdrop of 'added value' hub space

RR3 - James Gillespies

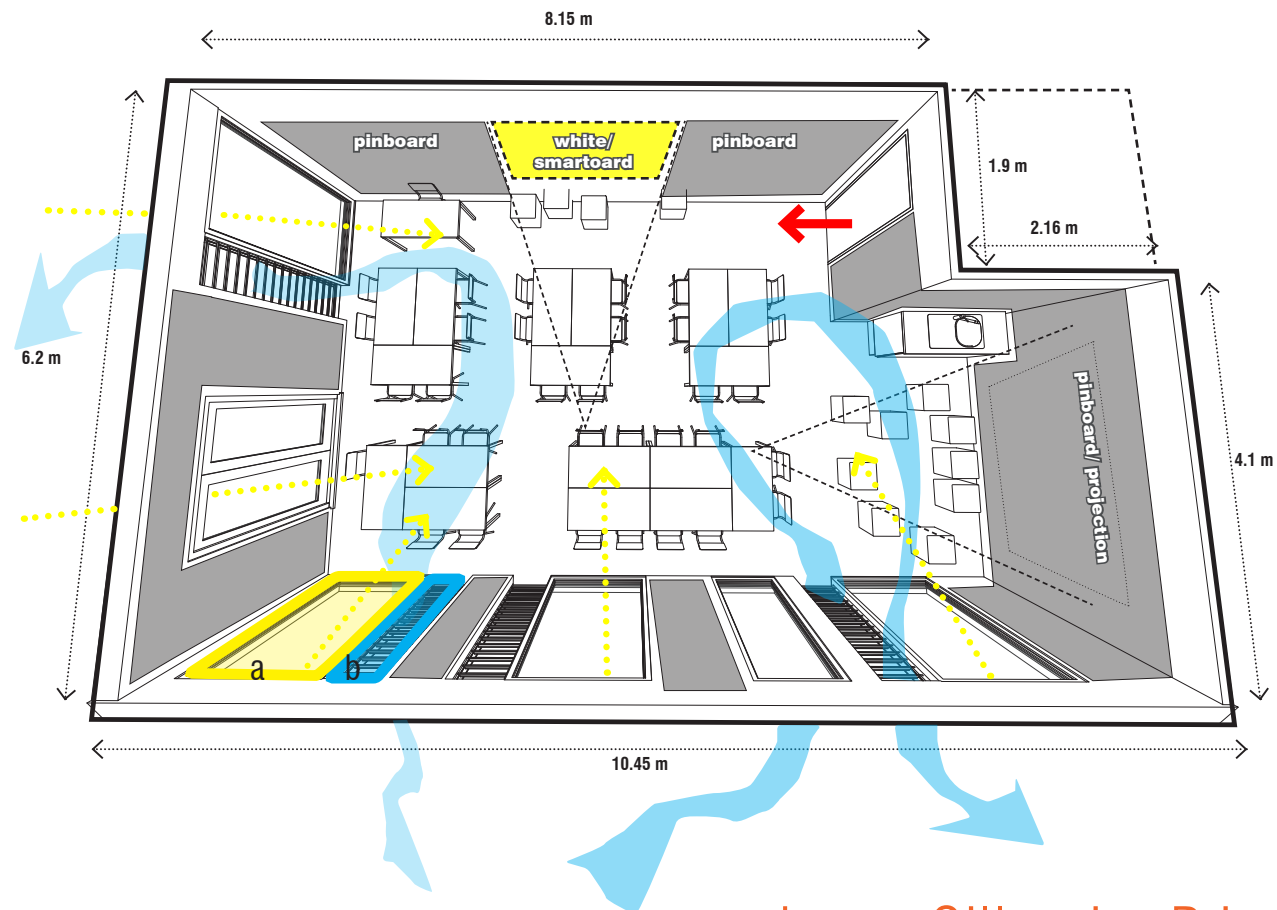
How can we further build on the successful development of the teaching needs and technical requirements of the classroom buildings in RR2?

- **Your needs** - these will differ slightly for every school - bespoke layouts
- **Added value** - we can build on the potential use of under used space within the plan and create hubs
- **Flexibility** - making further allowances for change in the future eg. with storage configurations
- **Creating delight**/ a fun place to learn and a sense of belonging to the school site!
- **Use of colour and material** to enhance and support the schools identity

James Gillespies Primary

Classroom evolution - technical & functional operation

- 60m² Class space
- 33 student seats
- Maximise display wall
- Flexibility of layout and furniture options
- Full height pinboards incorporating optimal height for trunking and smart boards
- Optimise amount of windows for daylight and ventilation with control of glare(via blinds) and natural ventilation(via opening louvre windows) kept as separately functioning systems



Evolution - 'added value' features

Access to external spaces from ground floor

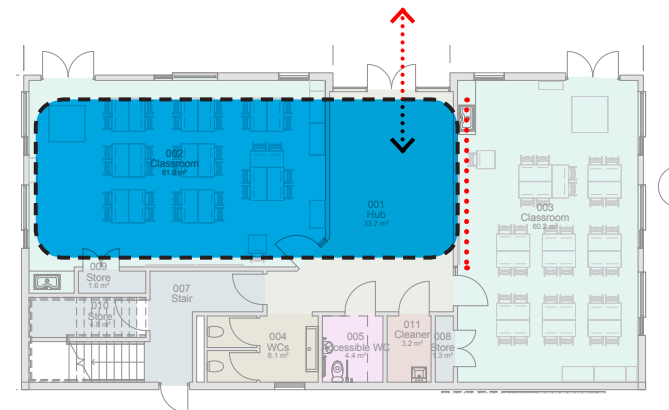
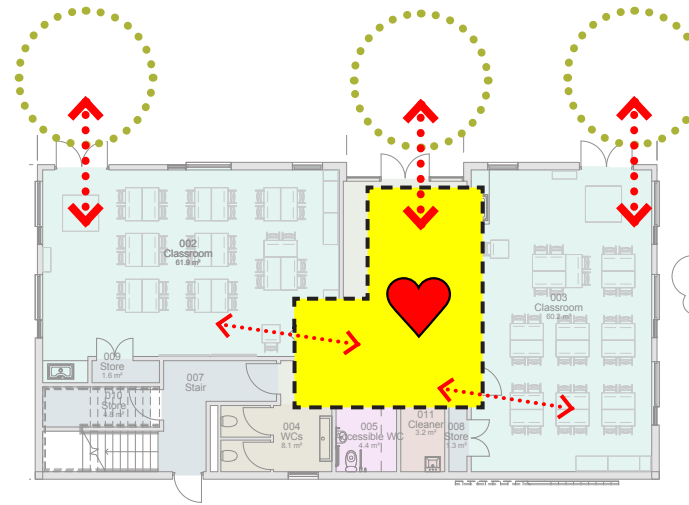
- Enhanced teaching provision related to developing curricula standards
- Ease of access for immediate external teaching

Centralised circulation

- All learning spaces open off one central, flexible shared space
- Central space is more than circulation and gives what is a small standalone building a 'heart' space rather than just a sequence of corridors
- Space can feature different furniture arrangements and informal teaching and display spaces according to needs
- Potential community uses

Flexibility/ shared spaces

- Shared classroom spaces by removing partition and using innovative furniture
- Apportion different spaces to a varied timetable of learning



Design



We consider.....

flexible

integrated

active

contextual

learning landscape

open

maximise playground

innovation as standard

fun

how will the proposals configure teaching spaces,

customise

circulation and form to deliver a contextually

open and **integrated** environment

innovation as standard

active

natural ventilation

that supports primary curriculum learning ?

light

communication

customise

contextual

integrated

integrated

shared

communication

learning landscape

open

connected

flexible

innovation

active

We look at design precedents

What is contemporary?



What is vernacular?



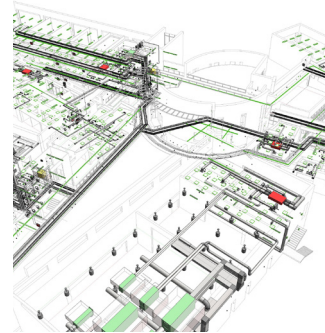
Culture, history and character



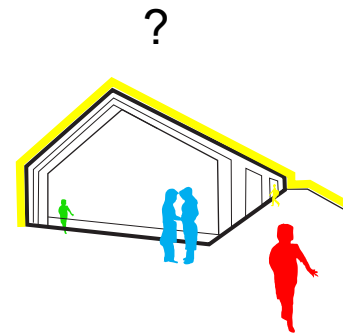
+



+



+



=



existing
buildings

history &
culture

research &
technical review

a simple
elegant
concept

**James Gillespie
Primary
School**

James Gillespies Primary School



- **Rising School Rolls is....**

... an **estate wide project** across a number of schools with specific imposed deadlines which are directly related to existing school requirements in Edinburgh now!

- **This builds on RR2!**

- Some aspects of the project look back to the success previous Phase 1 works, as architects we looking at the project with a **fresh view** for your individual school.

- **Engagement with stakeholders (you) is key**

- We understand that the **teachers, parents and local community** need to be consulted at key points.

- **Has a tight programme....**

- Your next **stakeholder meeting** is in **3.5 weeks** and we will do a **pre-planning presentation** to you in **September**

- Planning application **mid-September TBC**

- **Culture and context**

- We want to understand the significance of the **culture and history** behind the school and want to create a project that is sensitive to that.

Programme

